

# FABRICATION INSTRUCTIONS

Accessories:  
FUKO injection hose  
PVC vent ends – green & transparent  
Shrink on sleeves  
Connecting nozzles  
Closure plugs  
Insulating tape & rapid glue



Secure the area of the FUKO injection hose to be cut with insulating tape



FUKO injection hose is to be cut with heavy-duty clippers and to be cut to the desired length



The PVC installation – and vent ends, green and transparent, are to be cut to the desired length  
Rapid glue is to be applied to the connecting nozzle to ensure a secure



connection of the FUKO injection hose with the PVC vent ends.



The FUKO injection hose is to be slid over the connecting nozzle and fitted together so as to create a tight connection.



Shrink sleeve is to be installed in the middle, covering connection between the PVC-vent end and the FUKO injection hose...



...and is heated by a hot air machine.



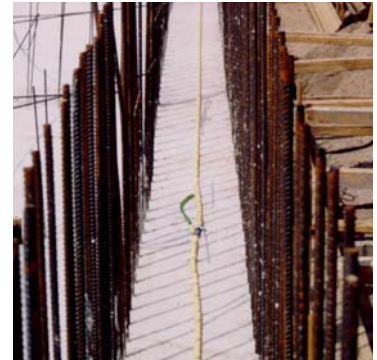
The FUKO injection hose is ready for installation.



Installation tools



Standard placement of the hose



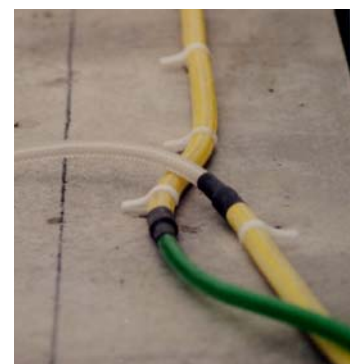
Drilling of holes for the installation



Example of how hose is to be fixed



Method of overlapping vent ends



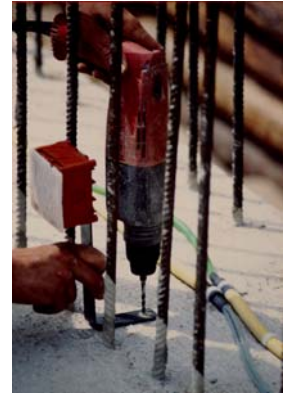


# JUNCTION BOX

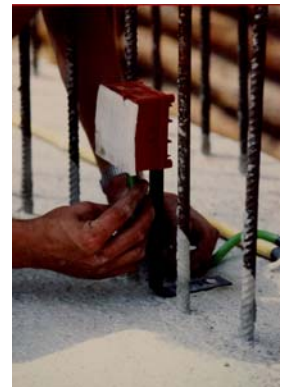


## INSTALLATION DETAILS

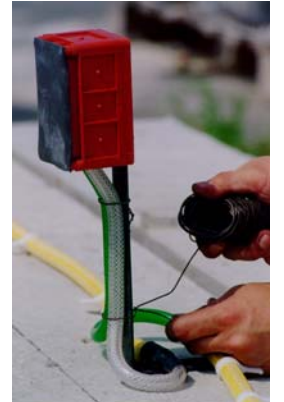
Line-up FUKO junction box with the foam material side facing the inside, which will be secured later to the form. Install bracket with two plugs into drilling holes of 6mm diameter. Bend the box approximately 5mm outwards.



For storing vent ends, drill a hole into the bottom of the junction box. For injection hose FUKO 1 – 14mm diameter, for injection hose FUKO 2 – 18mm diameter. Insert the PVC vent ends into the openings in the box and insert a closure plug in each of the open vent ends.



To avoid any movement or slippage, tie the vent ends with wire at the metal bracket

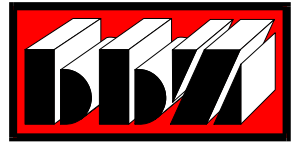


Build the form. The FUKO junction box is fixed with pressure against the inside corner of the form.





# INSTALLATION



## FLOOR TO WALL CONNECTION

Installation of the FUKO injection hose in a floor to wall connection



Installation of the FUKO injection hose in the area of a wall corner



**BBZ USA, Inc.**  
3400 Tree Court Ind. Blvd.  
St. Louis, MO 63122  
Tel: 800.325-9504 or 636.225-9400  
Fax: 800.551-5145 or 636.225-2049



**GREENSTREAK GROUP, INC.**  
A Family of Construction Companies